



FAQ-



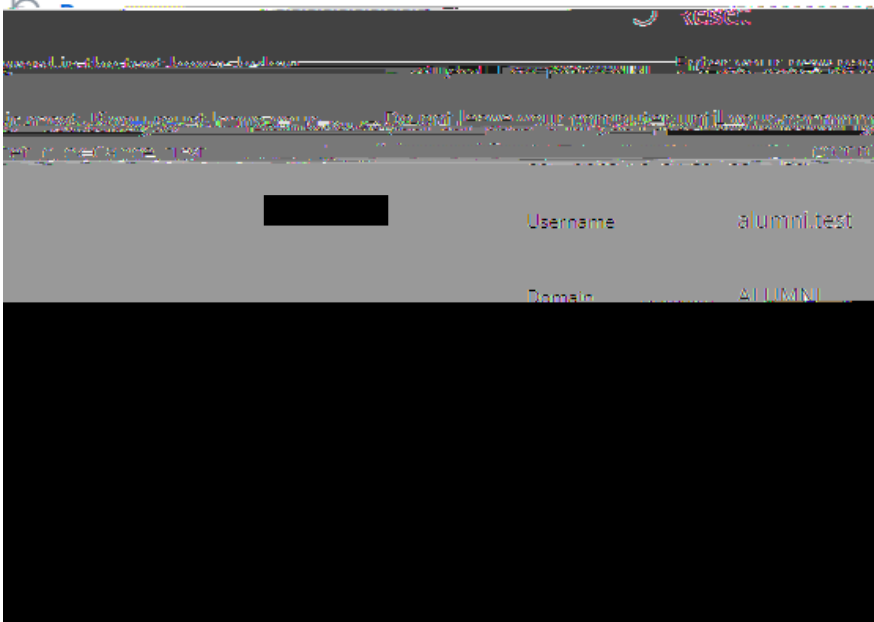
## FAQ– HOW DO I USE THE WILKES ALUMNI PASSWORD MANAGER





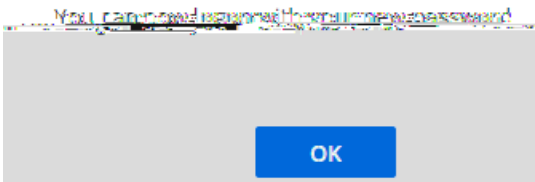
## FAQ– HOW DO I USE THE WILKES ALUMNI PASSWORD MANAGER

- Once security questions have been successfully answered, create your new password and confirm it by entering your new password again in **Confirm Password** field. Once done, click **Next**



- On the next screen, you will receive a notice that your password has been successfully changed

✔ Finished







FAQ-